

Newsletter

Spring 2011

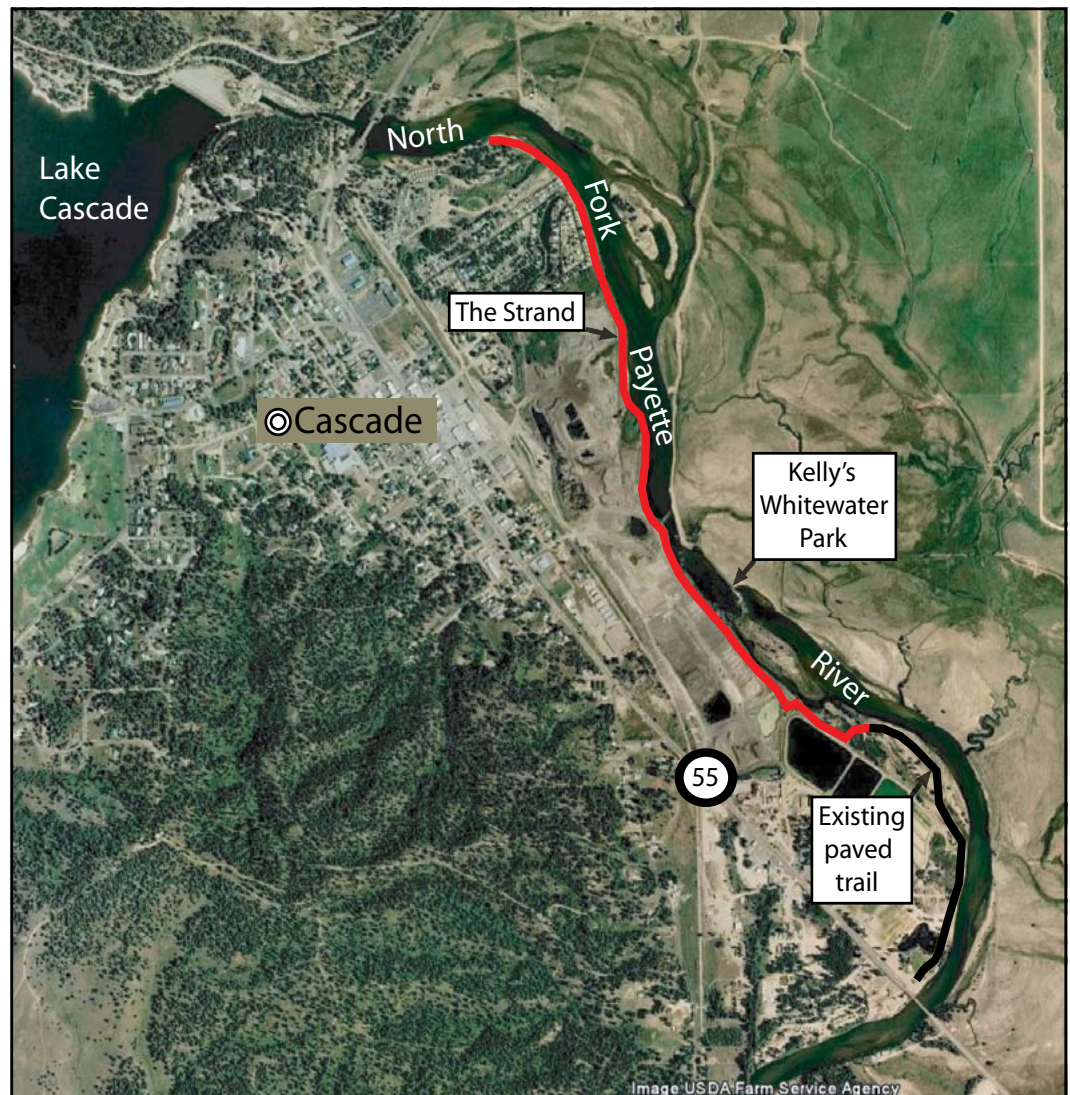
New 2.2-mile riverside pathway completed in Cascade: The Strand

Many positive forces came together in the last year to create "The Strand," a new 12-foot-wide, non-motorized pathway that runs along the Payette River in the City of Cascade.

Starting from the north end of town, the Strand winds along the river bank from the Water's Edge RV Park to Kelly's Whitewater Park and onward to connect to Cascade's existing paved pathway on the south end of town. All told, the Strand is 2.25 miles long from bridge to bridge.

It's a wonderful step forward for the City of Cascade, and it's another piece of the puzzle in realizing Valley County Pathways' comprehensive plan.

Valley County Pathways board member Dwight Jividen was a major force in researching and piecing (continued on page 3)



Boulder Creek pathway inspires outdoor classroom in new Fulton Natural Area

Valley County Pathways received three grants totaling \$83,558 in 2010 to create a new 1/4-mile pathway, conduct stream-side restoration activities along Boulder Creek and create an outdoor classroom near the Donnelly Elementary School. Construction work on the pathway began last fall and will be completed this spring and summer.

The project was made possible by a generous property donation by Donnelly residents Hugh L. Fulton and Georgia Ann Fulton. The Fultons donated seven acres of wetlands to the City of Donnelly, an area we're calling the Fulton Natural Area, and provided an easement to VC Pathways for the pathway.

Leslie Freeman, a VC Pathways volunteer, and Damon Yerkes, VC Pathways board member in Donnelly, put together

ships for the Boulder Creek project. The three grants were provided by the Idaho Department of Parks and Recreation (\$42,558), the U.S. Forest Service Resource Advisory Committee (\$37,000) and the Wittenburger Foundation (\$4,000).

Our partners in the Boulder Creek project include Trout Unlimited, Central Idaho Recreation Coalition (CIRC), the City of Donnelly, Donnelly Elementary School, the U.S. Forest Service, Idaho Fish and Game, the McCall Outdoor Science School, and the Idaho Department of Environmental Quality. Money for stream restoration and education was received by Trout Unlimited from the Laura Moore Cunningham Foundation, New Belgium Brewing, Idaho Power, DEQ 319 funds and the Lightfoot Foundation.

"The Boulder Creek project is an outstanding example of how we can blend environmental education and restoration work along with the development of recreation pathways for the community to enjoy," said Andy Olavarria, president of VC Pathways. "The property donation by Hugh and Georgia Ann Fulton was critical to making the whole project possible. We also have to thank Leslie Freeman and Damon Yerkes for pulling together a very innovative and exciting project that will have lasting benefits for students and the



An artist rendering shows how the Boulder Creek Trail will look next to the restored wetlands area this summer. The illustration is a water color by Claire Remsberg.

community."

As part of the project, Idaho Fish and Game and TU volunteers are restoring a quarter mile of Boulder Creek by planting 500 riparian shrubs to stabilize the creek bank last fall. Several hundred more plants will be planted this spring by Donnelly Elementary School 5th grade students and Fish and Game volunteers. The Donnelly students stabilized a severely eroding section of bank last June using a log-grid design.

The Donnelly 5th graders are creating interpretive signs for the Fulton Natural area trail to be installed in the spring. Later, through the placement of educational interpretive signs, the stream-restoration project will become an outdoor classroom, teaching visitors about wetland and stream ecology. The Donnelly students also monitor water quality in the stream.

"The Boulder Creek meadow is becoming an outdoor science lab in our backyard," says Dierdre Bingaman, the 5th grade teacher at Donnelly Elementary. "The students are definitely taking ownership. They're like, this is our creek, and we're going to protect it."

Public enjoys North Valley Rail-Trail in McCall

Valley County Pathways opened the North Valley Rail-Trail in May 2010. The trail is 3.5 miles long, running south from River Ranch, near the U.S. Forest Service Smokejumper Base, to Heinrich Lane, one mile short of Lake Fork.

The new pathway makes it possible for a seamless hiking, running or biking trip from downtown McCall on the existing paved trail to the North Valley Rail-Trail. The whole route, out and back, is 10 miles.

VC Pathways will continue to work on access agreements with landowners to extend the trail to Lake Fork and points south to Donnelly. If you are a property owner in this area and would like to help, please contact VC Pathways (contact info. on page 4).

The North Valley Rail-Trail was made possible by trail access agreements with Judd and Diane DeBoer, River Ranch, Lake Irrigation District, and a property donation from the Marvin Whiteman Family. Thanks to all!

We had a perfect number of volunteers show up for a work day in May to brush out the trail and install signs. We installed 15 new sign-posts and signs over a 4-mile area and brushed out several miles of the trail, particularly the new sections of the trail through DeBoer property by the Activity Barn and another section to the south, formerly owned by the Whiteman family.

I went out and rode the full length of the trail after the work



Steve and Cindy Jones enjoy the view along the North Valley Rail-Trail near a wildlife pond, south of McCall.

project, and it felt super cool to see all of the new signs along the trail and experience the trail like never before. By god, it looks like a trail and it rides like a trail.

It is truly a beautiful ride. Much of the trail is bordered by pine trees, so that provides an intimate experience with nature as the trail swings through the pastoral countryside south of McCall. You'll see hawks, eagles and ospreys flying overhead, sandhill cranes and songbirds.

Valley County Pathways encourages hikers, bikers and runners to check out the new trail. The terrain is great for just about anyone — particularly families and kids. Enjoy!

The Strand in Cascade (from page 1) . . .

together mixed land ownerships along the river to create the unified pathway alignment. He also did some ground prep with his own tractor. Landowners included the City of Cascade, Kelly's Whitewater Park easements and small pieces of state land and Bureau of Land Management property.

"Dwight sunk his teeth into this thing, and once he gets going on a project like this, he doesn't let go until it's done," said Cascade Mayor Dick Carter. "He did all the research and went through all of the land surveys to make this thing happen. He was definitely one of the key players in getting that project completed."

Another key player was Mark Pickard and his wife, Kristina, who have been key backers of Kelly's Whitewater Park in Cascade. The Pickards financed the \$100,000 pathway project.

Other helpful partners included Teresa Perry, manager of Lake Cascade State Park, and Mike Smith of the South Valley County Recreation District.

Future plans call for building a bridge to the island in Kelly's Whitewater Park, and building another bridge from the island to the east bank. Thanks to Phil and Yvette Davis, there is now an easement for a 4-acre park, on their cattle ranch, on the east side of the river opposite KWP.

A grand opening for the Strand is planned in the spring of 2011. Trail signs will be placed along the trail, and interpretive signs are planned as well. It will be a great amenity for Cascade residents and visitors.

For more information about the Strand, contact Dwight Jividen by email, dwight@cascadelakerealty.com.

Erv Olen Memorial Bench placed on Crown Point Trail

The Olen Family recently installed a new and very special bench on the north end of the Crown Point Trail, near Cascade, to honor the late Erv Olen. Erv was a great advocate for pedestrian trails and an awesome worker bee for Valley County Pathways. We are calling it the "Erv Olen Memorial Bench."

The bench is located in a beautiful spot that overlooks Lake Cascade near Vista Point. It also provides a direct view of Erv's favorite elk camp on West Mountain.

Part of the reason we picked that spot is that Erv had put a lot of work into that section of trail. The Putman family had donated a quarter-mile of private property to Valley County Pathways on the north end of the Crown Point Trail.

To marry that section of trail with the existing Crown Point Trail, we were required by the Bureau of Reclamation to build a fence along the eastern boundary of the pathway to keep ATV's off the trail.

Erv and I worked with Russ Perry of Cascade to build the A-frames for a continuous line of buck fence along the pathway. Jeff Halligan and Damon Yerkes cut post and poles in the Boise National Forest and delivered them to the project site. And Clint Kennedy's Cascade High School science class helped us finish the fencing project by drilling and screwing

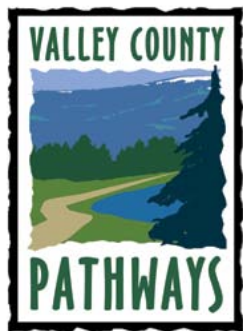


Shirley Olen enjoys the view of West Mountain and Lake Cascade from the Erv Olen Memorial Bench, located on the Crown Point Trail.

in the poles to connect the A-frames in a matter of several hours in the fall of 2007. Way to go Cascade High! Those kids rock!

As a longtime runner who had completed the Race to Robie Creek 22 times, Erv was a big fan of pedestrian pathways. He knew the public loved pedestrian pathways. "Build them and the people will come!" he always said.

- Steve Stuebner



Help the cause! Join VC Pathways!

Valley County Pathways is a non-profit organization that's dedicated to developing a system of pedestrian pathways in Long Valley that link together the communities of Cascade, Donnelly, Lake Fork and McCall. Our first priority is to develop a pedestrian pathway along the old

Railroad Right of Way between Cascade and McCall.

Go to www.valleycountypathways.org to see our vision on our master plan map.

How can I help?

Join Valley County Pathways. Tax-deductible membership dues help finance trail projects.

Membership levels:

- Student - \$10
- Regular - \$25
- Supporter - \$50
- Sustainer - \$100

Please send membership fee to VC Pathways, P.O. Box 455, Donnelly, ID 83615.

What else can I do?

- Volunteer. We always need volunteers for trail projects. Contact us if you'd like to help.

Contacts: Andy Olavarria, VC Pathways President
aolava@citlink.net; 208-315-4991.
Steve Stuebner, VC Pathways Vice President,
sstuebner@cableone.net; 208-484-0295